



HAND IN HAND

Interfaith Caregivers of Ozaukee County Newsletter • June 2011

Just Do It!

Just Do It! We've all heard that slogan from a famous shoe maker many times. It can be applied to many situations, but we'd like to ask you to use it today by deciding to volunteer with us. **Just Do It!**

Make the decision today to join our volunteer ranks! Take action now and call one of our coordinators to get signed up. We'd love to talk to you about our volunteer opportunities and tell you about how flexible we make it for our volunteers.

If you take action today, you can begin making the difference in the life of an Ozaukee County neighbor tomorrow. Many of our clients tell us how grateful they are for the assistance and friendship they receive from our volunteers. A client recently told one of our coordinators that she loves all of our volunteers and that the best thing she ever did was calling Interfaith for assistance. We love to hear good things like that!

Call today—**Just Do It!**

A Message from our Board President

Dear Interfaith Colleagues, Supporters, Volunteers and Friends,

As we begin with new officers for 2011-2012, we will also move forward with our Strategic Plan which the Board adopted in January.

First, on behalf of the Board and Staff, I want to thank the outgoing Board Members—Pat Treffert, Past Board President, Cheri Rusch, and Pat Weatherhogg. All have been valued members of the Board for at least six years, and we hope to keep them involved in differing roles. Also, I am pleased to welcome three very talented new Board members—Jean Lambo, with the Cedarburg Cultural Center; Jaclynn Miller Lephardt, Attorney with Moertl, Wilkins and Campbell; and Maria Shafranski, with Jewish Family Services.

I am energized by the challenges and opportunities of the next year and look forward to implementing and building on the Strategic Plan by:

- Reducing the number of full Board meetings and focusing more on effectively using our committees.
- Strengthening the current Board through orientation and involvement and seeking more diversity (e.g., backgrounds, age groups, and skills) based on organizational needs.
- Soliciting and evaluating feedback on current programs and identifying ways to recognize and thank our wonderful volunteers.
- Utilizing a plan to increase supporting congregations and liaisons, as well as developing new business partnerships and building on current financial activities to ensure growth and sustainability (e.g., seek matching funds, planned giving).
- Enhancing our visibility in the community through increased networking, promotional activities and seeking partnerships for fund-raising activities.

We welcome your ideas and comments and you can stay up to date on our activities and events by checking our website at www.interfaithozaukee.org. There you can find out what is going on, how you can help, volunteer, or be more involved. You can reach Liz Juern, our Executive Director at the Saukville office by calling (262-284-7130) or you can email me at dorothywahner@centurytel.net

Thank you for your help in making this a GREAT year.

Dorothy Wahner, President

2010 Summary

<i>Transportation (in county)*</i>	876
<i>Transportation (out of county)*</i>	222
<i>Visiting</i>	237
<i>Shopping</i>	428
<i>Housekeeping</i>	89
<i>Yard Work</i>	66
<i>Snow Removal</i>	39
<i>Odd Jobs</i>	14
<i>Reassuring Phone Calls</i>	34
<i>Paperwork and Bills</i>	7
TOTAL	2,012
TOTAL MILES DRIVEN	32,132
TOTAL HOURS	3,359

**round trips*

Our mission is to provide voluntary supportive services to seniors and adults with disabilities.

SUPPORTING CONGREGATIONS

Advent Lutheran Church-Cedarburg
 Beautiful Savior Lutheran Church-Mequon
 Christ Church-Mequon
 Christ the King Lutheran Church-Port Washington
 Community United Methodist Church-Cedarburg
 Crossroads Presbyterian Church-Mequon
 First Congregational-Port Washington
 First Immanuel Lutheran-Cedarburg
 Grace Lutheran Church-Thiensville
 Grand Avenue United Methodist Church-Port Washington
 Lumen Christi Congregation-Mequon
 Mequon United Methodist Church-Mequon
 Pilgrim UCC-Grafton
 St. Boniface-Mequon
 St. Francis Borgia Catholic Church-Cedarburg
 St. John's Evangelical Lutheran-Fredonia
 St. John's Lutheran Church-Grafton
 St. Joseph Congregation-Grafton
 St. Peter of Alcantara-Port Washington
 St. Peter's UCC-Saukville
 Trinity Evangelical Lutheran Church-Cedarburg

Thank you to the faith communities who support Interfaith with financial and in-kind contributions, as well as with volunteer support and identifying potential clients.

Board of Directors

Dorothy Wahner, President
Sigrid Lubner, Vice-President
Meadowmere

Lois Hoover, Secretary
Doris Chortek, Treasurer
Ellen Smith, Past President

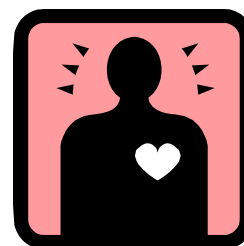
Jean Lambo
Cedarburg Cultural Center

Jerry McGinnis
Embassy Homes

Jaclynn Miller Lephardt
Moertl, Wilkins & Campbell, S.C.

Dorothy Rooney
Marina Shafranski
Jewish Family Services

Warner Schafer
Ruth Schwartz



Meet Our New Coordinator, Christine Michaels

As the new Program Coordinator for northern Ozaukee County, I am grateful to be part of such a dedicated staff. It is evident to me that the volunteers sincerely care about our clients. I feel blessed to be part of such a caring and compassionate group of people.

My previous experiences include working as the Volunteer Coordinator and Information & Referral Specialist for COPE Services. I am also an active volunteer in my church and my children's school. With all of my social service experience and volunteer work, Interfaith Caregivers is a great fit for me. I believe entirely in the mission, the clients we serve, and the wonderful group of volunteers who feel the same way.

I am pleased to be sharing an office with Sandy Ashley, the Southern Ozaukee Coordinator. Our office is located in St. John's Lutheran at 1193 Lakefield Rd., Grafton, WI 53024. The phone number is (262) 376-5362. If I am out of the office, please leave a message, I do check my voicemail often and will return your call as soon as possible!

Thank you to everyone who plays a part in Interfaith Caregivers being the success that it is.

Interfaith Volunteers' Time Valued at \$59,467 in 2010

Interfaith Caregivers of Ozaukee County has been a local, grass roots, not-for-profit organization since 1993, whose mission is to provide voluntary support services to seniors and adults with disabilities free-of-charge. Interfaith's services help clients remain independent by matching them with a trained and caring volunteer who provides:

- Transportation to medical or therapy appointments
- Shopping and errand-running
- Friendly visits and phone calls
- Light chores and home improvement
- Help with paperwork, mail and bills
- Non-medical respite care

Since the beginning, Interfaith Caregivers of Ozaukee County has brought together volunteers of many faiths to help their neighbors, acting as family members for those who may not have family or a faith community to assist them.

During 2010, Interfaith's 195 volunteers provided over 3,342 hours of service to seniors and adults with

disabilities in Ozaukee County.

The Independent Sector (a national coalition of corporations, foundations, and private voluntary organizations that works to strengthen America's nonprofit organizations) has calculated that the value of a volunteer hour in Wisconsin as \$17.79.

That translates to Interfaith's volunteers' time in 2010 is valued at over \$59,467. Of course, the benefit to the clients is immeasurable!

We rely on the generosity of individuals, supporting congregations, fundraising events, area business and community organizations to allow us to do what we do!

Your tax-deductible donation keeps Interfaith's services free-of-charge for seniors and adults with disabilities in our community.

Thank you!



Interfaith Caregivers of Ozaukee County — Donation Form

____ I would like to support Interfaith and keep services free-of-charge for clients!

Enclosed is my tax-deductible contribution of \$_____.

(Please make your check payable to Interfaith Caregivers of Ozaukee County.)

Name _____

Address _____

City _____ State _____ Zip _____

Please return to: *Interfaith Caregivers of Ozaukee County, P.O. Box 80226, Saukville, WI 53080*

Donations can also be made securely online at www.interfaithozaukee.org/donate





**Interfaith Caregivers
of Ozaukee County**

P.O. Box 80226
Saukville, WI 53080

PRSRT STD
U.S. POSTAGE
PAID
GRAFTON, WI
PERMIT # 11

Northern Ozaukee Coordinator

Christine Michaels

Serving Saukville, Port Washington, Fredonia, Belgium and surrounding areas:

(262) 376-5362

Southern Ozaukee Coordinator

Sandy Ashley

Serving Mequon, Thiensville, Cedarburg, Grafton and surrounding areas:

(262) 376-5362

Executive Director

Liz Juern

(262) 284-7130

www.interfaithozaukee.org



Upcoming Events

July 4 – Ice Cream Social

11am, Veteran's Park, Port Washington

August 18 – Client/Volunteer Luau

1:30pm, All are invited! Golden Hawaiians to perform and refreshment will be provided

September – Interfaith Awareness Month

October 12 – Volunteer Workshop

8:30-10:30am, Providence Place in Grafton, Speaker Jan Braby of the ADRC will talk about Planning For Your Senior Years.

October 27 – Caregiver Renewal Day

Cedarburg Cultural Center, sponsored by the Caregiver Coalition of Ozaukee County

Volunteer Opportunities Available Immediately

- Lawn mowing for women in Grafton and Cedarburg
- Grocery shopping help for Thiensville woman
- Housekeeping help for Port Washington man and Saukville & Mequon women
- Respite/non-medical companion for Alzheimer's, elderly, or ill clients throughout the county
- Drivers needed to transport clients, especially for out-of-county appointments
- Friendly visitor for Port Washington woman

Please call today for your summer volunteering!